

Newsletter

May 2019 | Edition 2



Artistic impression only. Colours, materials and form may vary.



Our School Day

School will start at 8:45am and finish at 3:15pm from September and the term dates are overleaf.

However, we are aware that some parents make require wrap around care due to work commitments. If breakfast/after school clubs are something you are interested in, we will need to get firm numbers so that we can staff these provisions appropriately.

If you know that you will definitely require either or both of these options, please drop me an email at head@lowerfarmacademy.org with the number of days and preferred hours of before/after school care so that I can start to put measures in place.

If you have any questions, please don't hesitate to get in touch.

Parent Events

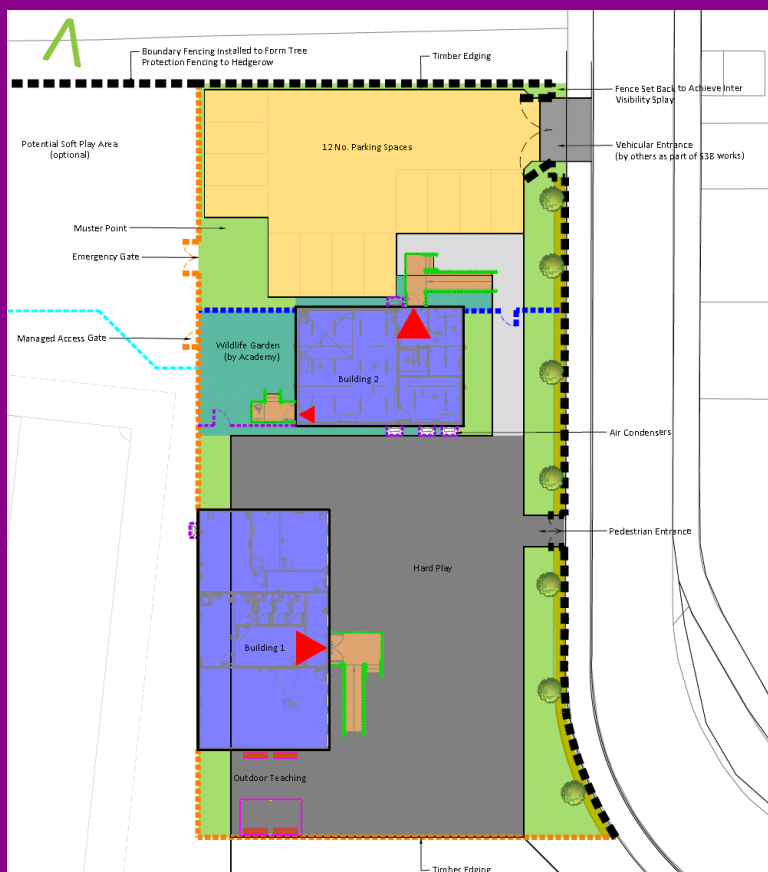
We have had two successful open events at **Nuneaton Old Edwardians RFC** over the past couple of weeks and we have another one coming up on **Monday 3rd June from 3:30pm—7:00pm** at the same venue. It would be great to meet anyone still looking for Reception places for September 2019 or 2020 as well as anyone interested in finding out more about our exciting new school.

We will also be hosting a new starter meeting for all parents with confirmed places for September 2019. As well as information sharing, we will ask for your involvement in shaping our school and your opinions on breakfast and after school clubs.

The date and venue for this meeting will be:

Nuneaton Old Edwardians RFC,
Weddington Road, Nuneaton, CV10 0AL

on **Friday 21st June at 5:30pm - 7:00pm.**



Building update

We have been working hard alongside the DFE, Clugston and Gleeds to shape the design for our amazing new academy and are really pleased and excited to share the proposed designs for our temporary site opposite.

The proposed layout shows two buildings (one teaching and one office and hall block) car park, playground and a mixture of grassed/landscaped areas. Please keep checking our website <http://lowerfarmacademy.org/> as well as both Facebook and Twitter for further updates.

Staffing

I am very excited to have appointed our School Business Manager who we will introduce in our June Newsletter. She comes with a wealth of experience and is going to be a real asset to the school as we move forward.

We will shortly be recruiting a Teaching Assistant for our first Reception class so please keep an eye out on <http://reach2.org/vacancies> after half term if you're interested.

Term Dates

INSET Day Monday 2nd September 2019
INSET Day Tuesday 3rd September 2019
Term starts Wednesday 4th September 2019
Half term Monday 28th October 2019 to Friday 1st November 2019
Term ends Friday 20th December 2019

INSET Day Monday 6th January 2020
Term starts Tuesday 7th January 2020
Half term Monday 17th February 2020 to Friday 21st February 2020
Term ends Friday 3rd April 2020

INSET Day Monday 20th April 2020
Term starts Tuesday 21st April 2020
Half term Monday 25th May 2020 to Friday 29th May 2020
Term ends Friday 17th July 2020

***1 other INSET Day yet to be confirmed.**