



# Lower Farm Weekly



Friday 19th November 2021

Congratulations to everyone for another amazing week and well done to those who have particularly stood out for displaying our school values this week.



## Beech Class:

Daisy Care  
Francesca Integrity

## Cherry Class:

Ajwa Achievement  
Sebastian Care

## Elder Class:

Brogan Resilience  
Giorgio Resilience

## Attendance

For week beginning 15th November:

Beech Class: 94%

Cherry Class: 90.2%

Elder Class: 84.6%

**Congratulations Beech class** with an attendance of 94%. It would be great to see who will be on top next week.

## Odd Socks Day 2021



Children wearing odd socks to celebrate diversity at the start of Anti-Bullying week.

## One Kind Word

The theme for Anti-Bullying Week this year has been 'One Kind Word.' All of our children have been focusing on spreading kindness this week and Beech Class have drawn pictures of the adults in school and thought of 'one kind word' to describe them - we hope you enjoy the pictures!



## Road Safety Week

At Lower Farm Academy we were celebrating Road Safety this week especially focusing on our Road Safety Heroes. We completed a mission in assembly to help the road safety team and understand how to keep safe when traveling on our roads and walking to school. Well done LFA, you completed the mission!



Friends of Lower Farm Academy Present

# CHRISTMAS POPCORN AND PYJAMA PARTY!

**TUES 30TH NOV 4:45 - 6:35PM**

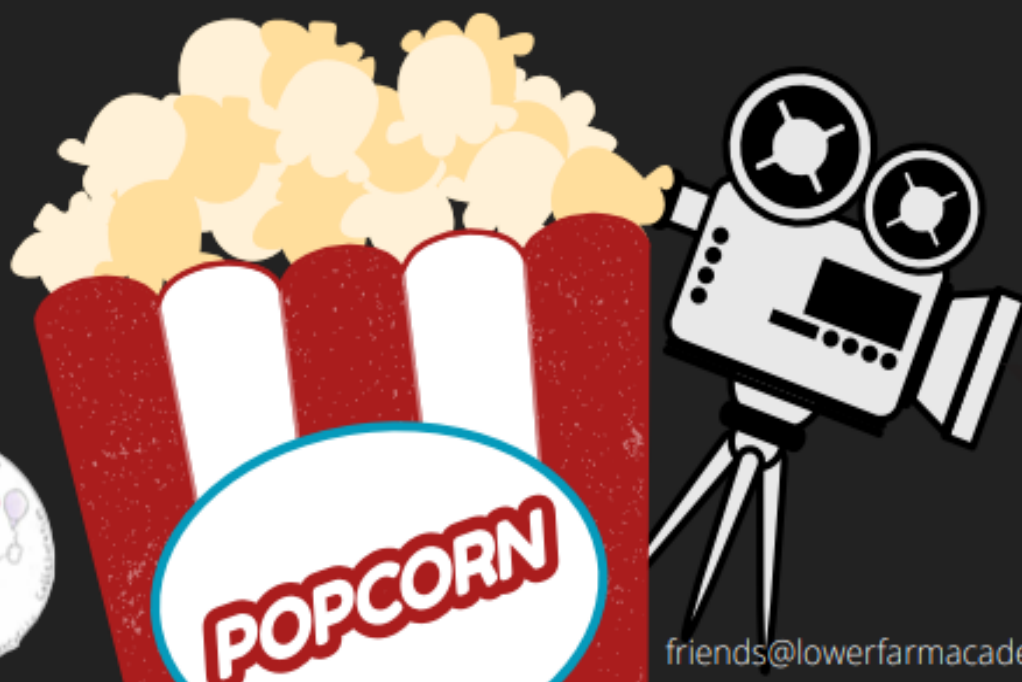
**DROP OFF AT AT SCHOOL**

**TICKETS £2.50 PRE-PURCHASE ONLY**

TICKETS AVAILABLE FROM 22ND NOV AT SCHOOL GATES

SNACK AND DRINK INCLUDED

Bring your empty water bottle for top-ups (to cut down on plastic) and a comfy cushion to sit on!



[friends@lowerfarmacademy.org](mailto:friends@lowerfarmacademy.org)



# Lower Farm Weekly



## Beech Class

This week in Reception children have been learning to match the right amount of objects to a number. We have been counting lots of different objects, playing games on our super white boards and ordering numbers to 10. Another fantastic week of learning Beech Class. Well done, superstars!



## Cherry Class

This week was another busy week in Cherry class. We have been counting in 2s during our Maths lesson. The children have been painting a frame for a portrait that was drawn in the Art lesson. During our writing topic we recreated the story of the Queens Hat!



## Elder Class

This term we are focusing on a pioneer called Neil Armstrong. The children of Elder class watched the first moon landing and loved the countdown to blast off!!







# Lower Farm Weekly



## Dates for your Diary

(Please note that these dates are subject to change due to possible Covid-19 restrictions - we are hoping they will all go ahead as planned, but will need to see what happens with confirmed cases and the guidance we receive).

**Friday 26th November:** Non-uniform Day - bring in a bottle for the Bottle Tombola.

**Tuesday 30th November:** Friends of Lower Farm Christmas Popcorn and Pyjama Party 4:45pm - 6:35pm (please see separate page for more details)

**Friday 3rd December:** Non-uniform Day - bring in some chocolate for the Chocolate Tombola.  
Parent/Carer Protective Behaviours Workshop 2:30pm - 3:00pm

**Thursday 9th December:** Parent/Carer Share Event 2:30pm - 3:00pm

**Friday 10th December:** Reception Class Nativity Performance followed by refreshments served by Friends of Lower Farm 2:00pm - 3:00pm

**Monday 13th December:** Year 1 Class Nativity Performance followed by refreshments served by Friends of Lower Farm 2:00pm - 3:00pm

**Wednesday 15th December:** Christmas Jumper and Christmas Dinner Day - donations for Save the Children via Just Giving page.

**Thursday 16th December:** Christmas Fayre 3:30pm - 5:30pm.

**Friday 17th December:** Non-uniform (party clothes) - Christmas Party Day **School Finishes at 13:30**

**Christmas Holidays - Monday 20th December - Monday 3rd January**

**Tuesday 4th January: INSET Day** (children not in school)

**Wednesday 5th January:** Children return to school for spring term



## Growing Brighter Futures



Lower Farm Academy is a new primary school in Nuneaton. Our brand new, purpose built site is now open and everyone is welcome to find out what we have been up to so far. Please look at our website and Facebook or contact us for a chat about our school and our admissions process. Hopefully we will have the opportunity to show you around in person on one of the following dates, but you can also contact the school office to organise another viewing if needed:

Date	Time
Wednesday 20 <sup>th</sup> October	09:30-11:30
Thursday 21 <sup>st</sup> October	16:30-17:30
Wednesday 17 <sup>th</sup> November	09:30-11:30
Thursday 18 <sup>th</sup> November	16:30-17:30
Wednesday 8 <sup>th</sup> December	09:30-11:30
Thursday 9 <sup>th</sup> December	16:30-17:30



**02475 267760**



**[office@lowerfarmacademy.org](mailto:office@lowerfarmacademy.org)**

**[WWW.LOWERFARMACADEMY.ORG](http://WWW.LOWERFARMACADEMY.ORG)**