



Lower Farm Weekly



Friday 3rd December 2021

Congratulations to everyone for another amazing week and well done to those who have particularly stood out for displaying our school values this week.



Beech Class:

Melody
Isla

Integrity
Care

Cherry Class:

Cole
Siya

Achievement
Collaboration

Elder Class:

Sienna
Xander

Resilience
Resilience

Attendance

For week beginning 29th November:

Beech Class: 93.1%

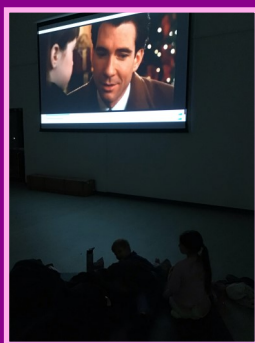
Cherry Class: 85.9%

Elder Class: 74.4%

Congratulations Beech class with an attendance of 93.1%. It would be great to see who will be on top next week.

Popcorn and Pyjama night

A big thank you to The Friends of Lower Farm for organising a fantastic popcorn and pyjamas night for the children. It was a fantastic way to start our Christmas celebrations and the children had a fabulous time.



Reading



A huge well done to those who are reading regularly and updating your reading diaries. The children are developing super speedy reading and it is great to hear them discussing lots of lovely stories. As we approach Christmas here is a list of great children's literature; The Polar Express, How the Grinch Stole Christmas, The Night Before Christmas, Stick Man, The Jolly Christmas Postman, Aliens Love Santa Claus, Horrid Henry's Christmas Presents. We have lots of these books available in school for children to read too. Please continue to use your reading diaries to tell us your amazing reading and look out for some top tips for reading stories in your child's reading bag this Friday.

Non-Uniform Day - Friday 3rd December

We are very grateful to everyone who brought chocolate to school today for our chocolate tombola at our upcoming Christmas fayre.



Lower Farm Weekly



Marcus Jones Visits Lower Farm Academy



We invited MP Marcus Jones to Lower Farm on Friday 26th November and this is what he said about our amazing school.

"I was delighted to visit Lower Farm Academy last week to see the new buildings and the progress that is being made at this wonderful new school in Weddington. It was great to see the superb facilities on offer and to meet some of the dedicated teaching staff.

I am confident that Lower Farm Academy will provide its pupils with fantastic educational opportunities and equip them with the skills they need for the future. "

Dates for your Diary

(Please note that these dates are subject to change due to possible Covid -19 restrictions - we are hoping they will all go ahead as planned, but will need to see what happens with confirmed cases and the guidance we receive).

Friday 10th December: Reception Class Nativity Performance followed by refreshments served by Friends of Lower Farm 2:00pm - 3:00pm

Monday

13th December: Year 1 Class Nativity Performance followed by refreshments served by Friends of Lower Farm 2:00pm - 3:00pm

Wednesday 15th December: Christmas Jumper and Christmas Dinner Day - donations for Save the Children via Just Giving page.

Friday 17th December: Non-uniform (party clothes) - Christmas Party Day **School Finishes at 13:30**

Christmas Holidays - Monday 20th December - Monday 3rd January

Tuesday 4th January: INSET Day (children not in school)

Wednesday 5th January: Children return to school for spring term



Lower Farm Weekly



Beech Class

On Monday children in Reception had a magical launch day for the Polar Express. We had a special breakfast together, completed lots of lovely Christmas activities (some that are super special for our grown ups) and then put our pyjamas on to watch the film together in the hall with hot chocolates and special treats. 'This is the best day I have ever had'.



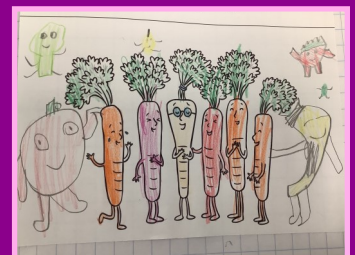
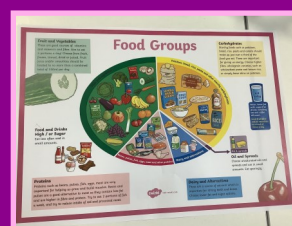
Cherry Class

We have been looking at place value in Cherry class this week with the children using Base 10 to partition a number into Tens and Ones. During topic this week we have been exploring the different classification groups of animals .



Elder Class

This week in Elder Class we have been focusing on healthy eating and learning all about the foods which are good for you and food we shouldn't enjoy too much! The children were already very knowledgeable about their diet and what we need to stay fit and healthy. Well done Elder Class.





Growing Brighter Futures



Lower Farm Academy is a new primary school in Nuneaton. Our brand new, purpose built site is now open and everyone is welcome to find out what we have been up to so far. Please look at our website and Facebook or contact us for a chat about our school and our admissions process. Hopefully we will have the opportunity to show you around in person on one of the following dates, but you can also contact the school office to organise another viewing if needed:

Date	Time
Wednesday 20 th October	09:30-11:30
Thursday 21 st October	16:30-17:30
Wednesday 17 th November	09:30-11:30
Thursday 18 th November	16:30-17:30
Wednesday 8 th December	09:30-11:30
Thursday 9 th December	16:30-17:30



02475 267760



office@lowerfarmacademy.org

WWW.LOWERFARMACADEMY.ORG