



Lower Farm Weekly



Friday 14th January 2022

Happy New Year and welcome back to a new term.

We have lots of interesting and exciting learning taking place throughout the term. Reception are covering Farm Yard Fun, year one will focus on The Great Fire of London and year two are learning about The Town Mouse and the Country Mouse. I look forward to seeing all their fantastic work as they progress through their themes.

As we move through the winter months please remember that any hats, scarves or gloves need to be named. It is also quite slippery some mornings so please ensure you are walking onsite and that children have flat, sensible shoes.

Congratulations to everyone for an amazing term and well done to those who have stood out for displaying our school values this week.



Beech Class:

Francesca Resilience
Enzo Achievement

Cherry Class:

Hugo Integrity
Esmae Achievement

Elder Class:

Baileigh Resilience
Giorgio Achievement, Integrity

Attendance

For week beginning 10th January:

Beech Class: 96.6%
Cherry Class: 93.7%
Elder Class: 93.9%

Congratulations Beech class with an attendance of 96.6%. It would be great to see who will be on top next week.



As we are entering a new term I just want to take the opportunity to remind all of our community about our school uniform expectations.

School Uniform:

- Purple sweatshirt or cardigan
- White polo shirt
- Black/grey trousers/skirt/shorts
- Black shoes or boots (no coloured laces or heels)
- Purple summer dresses can we worn in the warmer months

PE Uniform:

- PE Bag
- Black shorts
- Purple t-shirt
- Black leggings/tracksuit bottoms
- Plain practical trainers, football boots or pumps

In addition to this, as a gentle reminder, we ask that children do not have nail varnish, tattoos, make-up, JoJo Bows or Alice bands with ears/ large attachments during the school day. We love to see these on non-uniform days though! We have also noticed that children are bringing items from home into school in their bags/ pockets. We would ask that these are left at home because items become lost and broken and this can cause distress to the children.

Arriving at School

Please ensure children arrive on time in the morning. The side gates will be locked at 8:45am. After this time, children will enter school via the front door.



Lower Farm Weekly



Beech Class

Beech class have welcomed 9 new class mates this week, with the addition of the



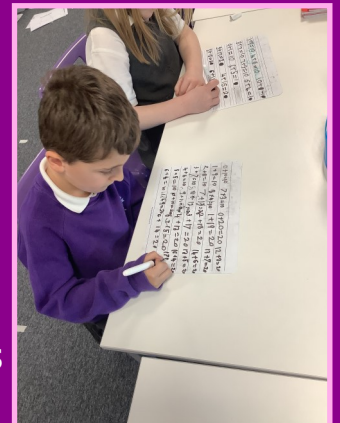
fluffiest chicks we have ever had. We have learnt about life cycles, watched how chicks grow inside the egg and observed them pipping/hatching. The children have been fascinated and very excited. We can't wait to be able to hold them next week.



Cherry Class



Cherry class have been making number bonds to 10 in Maths this week. The children worked systematically and used their knowledge of number bonds to 10 to make number bonds to 20. Our new learning adventure has been about 'The Great Fire of London', we explored some of the differences between 1666 and 2022.



Elder Class

The children of Elder class have been learning all about traditional fairy tales and focusing on a beautiful story called The Town Mouse and The Country Mouse. We've talked about the importance of keeping our traditional stories alive by telling them to children through the generations.





Lower Farm Weekly



Dates for your Diary

Tuesday 1st February: Parents/Carer Pupil Progress Meetings 13:00 - 18:00

Friday 11th February Non-Uniform Day- Dress to Express

Half Term: Monday 21st February - Friday 25th February

Thursday 3rd March: World Book Day

Friday 18th March: Comic Relief - non-uniform day

Friday 25th March: Mothers Day Afternoon Tea 14:00

Thursday 31st March: Parent/Carer Share Event 14:30

Wednesday 6th April: Reports Sent Home

Friday 8th April: School Finishes at 13:00

Easter Holidays -

Monday 11th April - Friday 22nd April

Monday 25th April: INSET Day (children not in school)

Monday 2nd May: Bank Holiday

Half Term: Monday 30th May - Friday 3rd June

Wednesday 6th July: School Induction Day

Friday 8th July: New Reception Children Stay and Play 9:00 - 12:00

Saturday 9th July: Sports Day/Summer Fayre

Monday 18th July: Reports Sent Home

Tuesday 19th July: Optional Parents Evening 15:30 - 16:30

Thursday 21st July: School Finishes at 13:30 for summer holidays