



Lower Farm Weekly



Friday 20th January 2023

Travel to and from Lower Farm Academy

Please read – we have had a number of near-misses

Please can we ask all parents/carers who drive to school to follow the **unofficial one-way system** shown below on the map. This will help ease traffic flow and prevent any accidents from two-way traffic and parked cars. It will also prevent cars having to turn around which has led to cars mounting the curb and a number of near misses.

Please can we also ask that parents/carers **do not park across any driveways/access roads** in the area – we have residents and private ambulances which need access to their drives/access roads.

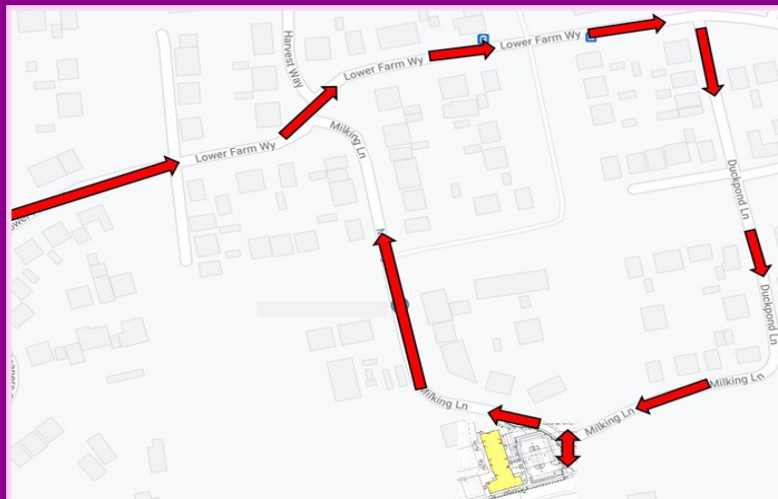
Please can we also ask parents/carers **not to park on the yellow zigzags/double yellow lines** for safety reasons.

I know parking is not straight forward in a housing estate and it may require people to walk certain distances, but we have asked on a number of occasions for you to work with us on this matter as we are only going to get bigger/busier. If anyone has any other suggestions, I am happy to discuss them as the safety of our pupils and community is paramount.

I would also ask that we maintain respectful language (spoken and sign) when speaking with local residents.

Only parents/carers with an agreement from the school office may use the school car park. **No other parents/carers should use the school car park** (unless using breakfast/after school club or the morning drop off lane). Please can you notify all of your child's authorised to collect contacts e.g. grandparents etc.

Thank you for your cooperation in this matter.



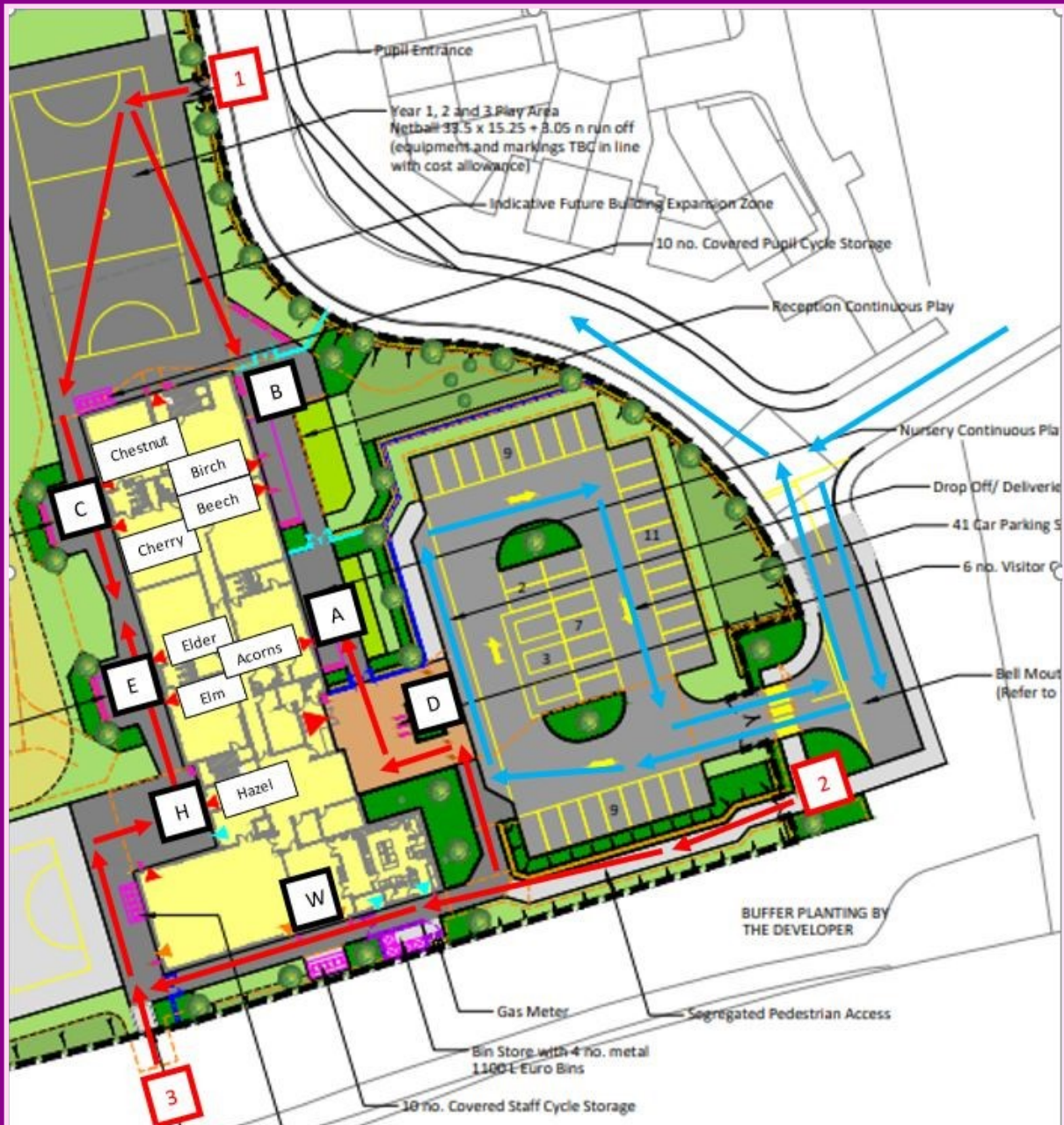
Drivers (see additional map also on following page)

- Drop off by drivers is for **morning drop off only**. No vehicles should enter the car park after school. (Unless special permission as been granted).
- Drivers enter through the car park gate and go around the car park in a one-way system as shown by the blue arrows.
- They drop their children at point D where a member of staff will open the door and direct the children to where they need to go (Reception children will be able to go through gate A if using the drop off facility).

Parents/carers should stay in their vehicles at all times to keep the traffic flowing as much as possible.

Pedestrians

- Pedestrians can enter the school through gates 1, 2 or 3.
- They can walk in either direction around the school building to drop off/collect children and leave through any of the gates – 1, 2 or 3.
- Nursery children dropped off/collected from point A.
- Reception children dropped off from points A or B and collected from point B.
- Year 1 children dropped off/collected from point C.
- Year 2 children dropped off/collected from point E.
- Year 3 children dropped off/collected from point H.
- Wrap around (breakfast and after school clubs) dropped off/collected from point W.





Lower Farm Weekly



Congratulations to everyone for another amazing week and well done to those who have particularly stood out for displaying our school values this week.

Attendance



For week beginning 16th January:

Beech Class:	94.5%
Birch Class:	96.2%
Cherry Class:	98.9%
Chestnut Class:	96.0%
Elder Class:	96.3%
Elm:	95.2%
Hazel:	92.9%

Congratulations to those classes that have reached an attendance of **97% or above**. It would be great to see every class reach 97% next week.

Eco Team

We are very proud of our children who have taken on daily litter patrols to help improve our environment. They show great pride and care for their environment and understand that taking part in a small way can make a big difference. Thank you for all your hard work!



Value Awards



Birch Class

Khush	Integrity & Respect
Orson	Achievement

Beech Class

Luna	Achievement
Hannah	Care

Cherry Class

Grace	Resilience
Daisy	Care

Chestnut Class

Esther	Achievement
Tyler	Integrity

Elder Class

Charles	Achievement & Resilience
Leo	Achievement & Resilience

Elm Class

Sammy	Achievement & Resilience
Peter	Achievement & Integrity

Hazel Class

Bailey	Achievement
Dylan	Achievement



Lower Farm Weekly



Dates for your Diary

Monday 6th February: Reception trip to Ash End Farm 9:00 - 15:15

Friday 10th February: Dress to Express - non-uniform day

Tuesday 14th February: Parents/Carer Pupil Progress Meetings 13:30 - 18:00

Thursday 16th February: Friendship Disco - times and details to be confirmed

Half Term: Monday 20th February - Friday 24th February

Thursday 2nd March: World Book Day - non-uniform day

Friday 3rd March: Friends of Lower Farm Magic Show 18:30 - 20:00 (*see below poster*)

Wednesday 8th March: Year 1 trip to Tamworth Castle 9:00 - 15:15

Friday 17th March: Comic Relief - non-uniform day

Monday 20th March: Mothers' Day Celebration 14:00

Wednesday 22nd March: Parent/Carer Share Event 14:30

Thursday 30th March: Easter Bingo 17:00 -19:00

Friday 31st March: School Finishes at 13:30 for Easter Holidays -

Monday 3rd April - Friday 14th April

Monday 17th April: INSET Day (children not in school)

Monday 1st May: Bank Holiday

Monday 8th May: Bank holiday for the coronation of King Charles

Wednesday 17th May: Parent/Carer Share Event 14:30

Half Term: Monday 29th May - Friday 2nd June

Friday 16th June: Fathers' Day Celebration 14:00

Saturday 1st July: Sports Day / Summer Fayre

- Sports Day 11:00 - 12:00
- Summer Fayre 12:00 - 14:00

Wednesday 5th July: School Induction Day

Monday 24th July: End of Year Disco 17:00—19:00

Tuesday 25th July: Non-school uniform. **School Finishes at 13:30 for summer holidays**

Flip and Dippy present the

Greatest Show

Skateboards
of DOOM

Ringmasters
Surprise

Water
Woman

Fun tastic
Feats

Mischief
& Mayhem

Incredible(s)
Magic



An evening of daring stunts, magic & wonder

FRIENDS OF LOWER FARM ACADEMY INTRODUCE A FAMILY EVENT

Date: 3RD March 6:30 – 8pm At: Lower Farm Academy

Price: £3.50 Per Person - Parental supervision required

Book tickets at: www.pta-events.co.uk/friendsoflowerfarmacademy

Refreshments will be available including a Crazy Clown Store!

Details to free entry colouring competition coming soon