



Lower Farm Weekly



Friday 21st June 2024

Congratulations to everyone for another amazing week at Lower Farm Academy.

Value Awards



Beech	
Penelope	All school values
Birch	
Archie	Resilience & Achievement
Cherry	
Francesca	Achievement & Care
Chestnut	
Willow	Resilience
Year 2	
All children in Year 2 for being superstars completing their SATs	
Hazel	
Alexandr	Resilience & Achievement
Holly	
George	Achievement
Oak	
Thomas	Resilience & Achievement

Attendance

For week beginning 17th June 2024



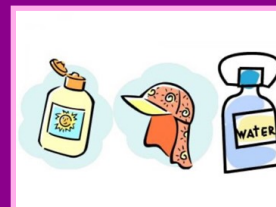
Beech Class	97.9%
Birch Class	95.1%
Cherry Class:	88.0%
Chestnut Class:	95.2%
Elder Class:	93.9%
Elm Class:	100%
Hazel Class	92.1%
Holly	92.3%
Oak	95.9%

Congratulations to those classes that have reached an attendance of **97% or above**. It would be great to see every class reach 97% next week.

Dates for your Diary

- Saturday 29th June:** Sports day from 10:15 - 11:45
Summer Fayre 12:00- 14:00
- Monday 8th July:** Parent/Carer Share Event 14:30
- Wednesday 10th July:** Transition Day
- Monday 15th July:** Year 3 trip to Think Tank
- Thursday 18th July:** school closes at 13:30 for summer holidays
- Monday 2nd September:** Staff Inset day - school closed
- Tuesday 3rd September:** Staff Inset day - school closed
- Wednesday 4th September:** School starts for Years 1 - 5
- Monday 9th September:** School starts for Nursery and Reception

Warm Weather Protection



As we are now having warmer weather please remember to apply sun protection to your child in the morning before school (some brands have a "once a day" option if that helps) and ensure they bring a hat and a drinks bottle to keep hydrated.

Little Growers' Club

As a treat for all their hard work over the summer term, the 'Little Growers' Club went on a visit to our lovely, local garden centre 'Oak's Nurseries'. They were so excited to go and see lots of different plants and flowers in the place where they are grown and sold. The children each got a little plant to take home, as a thank you for all their hard work over the summer term, and Keith, the owner, very kindly gave us a raspberry bush to bring back to school and plant. What a kind gesture!

The children have loved growing fruit, vegetables and flowers in our 'Little Growers Club'. They have grown things from seed and carefully looked after everything as it has grown thanks to the wonderful generosity of our PTA who funded everything from tools and seeds to compost and gardening gloves. As you can see from their smiling faces, we have had a brilliant time!





Lower Farm Weekly



Saturday 29th June 2024

Summer Fayre Information

- We can't wait to welcome you to the summer fayre this year on Saturday 29th June after sports day! Here's a few details!
- The fayre will start after sports day, once all the teachers have dismissed the children and got to their stalls! There will be bunting in place stopping access to the fayre until we are ready to begin, which shouldn't take long, and we thank you for your patience during this time!
- Please see the map which shows the exciting games and stalls we've got lined up for you!
- Please see the raffle poster and take a look at the amazing prizes we've got on offer! Raffle tickets will be on sale at the summer fayre in the hall and the raffle will be drawn at 1.30pm at the fayre (we will take your contact details when you buy tickets so if you're not at the fayre when prizes are drawn, we can call you afterwards!)
- There will be delicious food on sale in the hall, including Greggs sausage rolls, samosa's, lunchbox items for children, ice pops and Noel's ice-cream!
- There will be a bouncy castle, a science/slime workshop, and a professional face painter! Please note that face paint isn't allowed on the castle, so if children would like to do both, they will need to go on the castle first before having their faces painted.
- Please bring cash.
- Enjoy the music from our Halloween disco DJ, bringing the summer vibe for us!.

FRIENDS OF LOWER FARM ACADEMY

SUMMER FAYRE

Saturday 29th June
12 - 2pm

LOWER FARM ACADEMY
MILKING LANE, NUNEATON CV10 0FG

FREE ENTRY

JOIN US FOR LOTS OF FUN!

- Bouncy Castle
- Fun Games
- Soak the Headteacher
- Raffle
- Face Painting
- Yummy Food
- Fire & Police Visits
- Bric-a-Brac
and much more!

Ice
Cream



ALL PROCEEDS WILL GO TOWARDS SCHOOL PROJECTS!



FRIENDS OF LOWER FARM ACADEMY
SUMMER FAYRE

RAFFLE
TICKETS



£1 per ticket

Winners drawn @ 1.30pm on 29/06/2024
(You'll be contacted to arrange prize collection if you're not here)

ALL PROCEEDS WILL GO TOWARDS SCHOOL PROJECTS!



Prizes Include

- Twycross Zoo (4 x annual tickets, redeemable for adult or child tickets. *If winner already has annual tickets, it can be upgraded to membership*)
- Coventry City FC (2 x tickets to a 2024/25 league match at the CBS Arena)
- Dreamy Cow (£15 voucher)
- Cutting Rooms (cut & blow-dry)
- Aldi (portable BBQ)
- Paige's Pitstop (£10 voucher)
- Muddy Ducks (3 x free sessions)
- Atherstone Leisure Complex (family swim or exercise class)
- Affection in Confection (sweet hamper)
- Cheeky Monkeys (admission voucher)
- KFC (£8 voucher)

Plus various hampers and other exciting prizes!



FRIENDS OF LOWER FARM ACADEMY
TO OUR AMAZING SUPPORTERS



little feet... big mood!

everyone ACTIVE

WE COULDN'T DO IT WITH YOU, THANK YOU!

SCHOOL CLASSROOMS

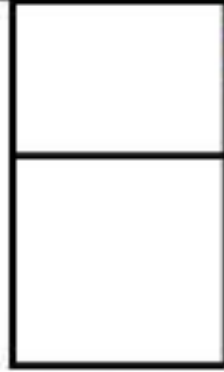
KS1 PLAYGROUND



FIRST AID



UNIFORM SHOP



DJ

(500g PLUVERS)

500g PLUVERS

MAIN HALL



FOOD, BEVER & ICE CREAM STALL



BOTTLE TORPEDO



RAFFLE

RAFFLE TICKETS & 4700PM PRIZE DRAW

PLAYGROUND TREES



SOAK THE REARTEACHER

PLAYGROUND CHIMPING PLANE



HOOP-A-POOP



UNLUCKY FIRE POLICE



UNLUCKY FIRE & RESCUE



WELLY WAGGING



THE WREATH STALL (AVAILABLE BY YEAR 2)



SELFIE



FACE PAINTING (FACES BY ANCHOR)



WIB SCIENCE

KS2 PLAYGROUND



SHOP

BEAT-A-BEAT



SPLAT THE RAT



KOOL-A-COOL FOR A BOTTLE



TIC TAC TOE



GP



BEAT THE GOALIE

Wraparound Care for Lower Farm Academy

After school care every day the school is open to children, along with multi-activity camps during the school holidays.



The coaches are knowledgeable, respectful and they have a full understanding of the school's ethos.



Academic year 2024-25



**SCAN HERE FOR
MORE INFORMATION**

or visit www.premier-education.com/parents/childcare/



Based on over 15,000 reviews

Premier Education are honoured to be able to provide the wraparound care at your school.

Our aim is to deliver a top quality, Ofsted registered provision, with a range of stimulating activities in a safe, secure and fun environment, providing an outstanding service for busy parents.

Parents can relax knowing their children are in safe hands as all staff have experience working with primary school children, have been DBS checked, and hold Emergency First Aid and Safeguarding certificates.

Wraparound care sessions are open to children from Reception to Year 5, with no deposit or registration fee required. Healthy snacks are provided, with specific dietary requirements also being catered for.

Lower Farm Academy 2024-25

After School

15:15 - 16:15 = £6

15:15 - 17:00 = £9

15:15 - 18:00 = £11

Book now at:

www.premier-education.com

Contact us at:

Lballey@premier-education.com

Ofsted registration number: 2694606



15%
discount
for siblings



FRIENDS OF LOWER FARM ACADEMY

Second Hand Uniform

- Scan the QR code or use website link to access the store
- Stock levels automatically updated to show what is in stock
- Order directly from the store & any purchases will be given to child's teacher to pass on at pick up / drop off
- All proceeds go towards school projects

[HTTPS://FRIENDS-OF-LOWER-FARM-ACADEMY.SUMUPSTORE.COM/](https://friends-of-lower-farm-academy.sumupstore.com/)



LEAVE OF ABSENCE DURING TERM TIME

UPDATED INFORMATION FOR PARENTS

The Supreme Court has clarified the law on unauthorised leave, including holidays, during term time (*Platt v Isle of Wight* 2017). The Supreme Court has made clear that attending school 'regularly' means that the children must attend school on every day that they are required to do so. As such, the parents of any child who is absent from school without authorisation for any length of time are likely to be considered as committing an offence under s444 of the Education Act 1996.

The regulations regarding Leave of Absence (The Education (Pupil Regulations) (England) Regulations 2008 as amended by Education (Pupil Regulations) (England) (Amendment) Regulations 2013.) [advise](#):

- Head teachers **shall not grant any** Leave of Absence during term time **unless they consider there are exceptional** circumstances relating to the application.

If the leave is granted, Head teachers ~~are able to~~ determine the number of school days a child can be absent for.

It is for the Head teacher to decide what is 'exceptional' and it is at their discretion if the circumstances warrant the leave to be granted. When making an application for Leave of Absence in advance parents are advised to give sufficient information and time to allow the Head teacher the opportunity to consider all the exceptional circumstances and to notify parents of their decision. It is advised that if the resident parent has not received notification or a response regarding the leave of absence application, it is their responsibility to ascertain if the leave is authorised prior to the start of the leave.

The school can only consider Leave of Absence requests which are made by the 'resident' parent ~~is~~ the parent with whom the child normally resides.

Where applications for leave of absence are made in advance and refused, the child will be required to be in school on the dates set out in the application. If the child is absent during that period, it will be recorded as an unauthorised absence, which may result in legal action being taken against the parent(s), by way of a Fixed Penalty Notice.

Where a leave of absence is requested, but additional days taken either prior to or after the request may be considered as part of the leave of absence and could result in a Fixed Penalty Notice being issued to the parent(s).

Each application for a leave of absence will be considered on a case-by-case basis and on its own merits.

Leave of Absences which are not made in advance cannot be authorised in line with legislation. This will result in the absence being recorded as 'unauthorised'. This may result in legal action against the parent, by way of a Fixed Penalty Notice. All matters of unauthorised absence relating to a Leave of Absence will be referred to the Warwickshire Attendance Service, part of Warwickshire County Council.

It is important to note, Fixed Penalty Notices are issued to each parent of each absent child, (for example 2 children and 2 parents, means each parent will receive 2 invoices in the amount of £120 each, totalling £240 for both children, this is reduced to £80 per child if paid within 21 days).

Where a Fixed Penalty Notice is not paid within the required timeframe as set out on the notice, the matter will be referred to Warwickshire County Council's Legal Services to consider instigating criminal proceedings under S444 Education Act 1996.

Fixed Penalty Notices are issued in accordance with Warwickshire County Council's Code of Conduct for Penalty Notices.

Your child's progress academically as well as socially is our shared priority

Warwickshire School pupils recorded 96,366 half day sessions of absence due to holiday in the Academic year 2021/22.